

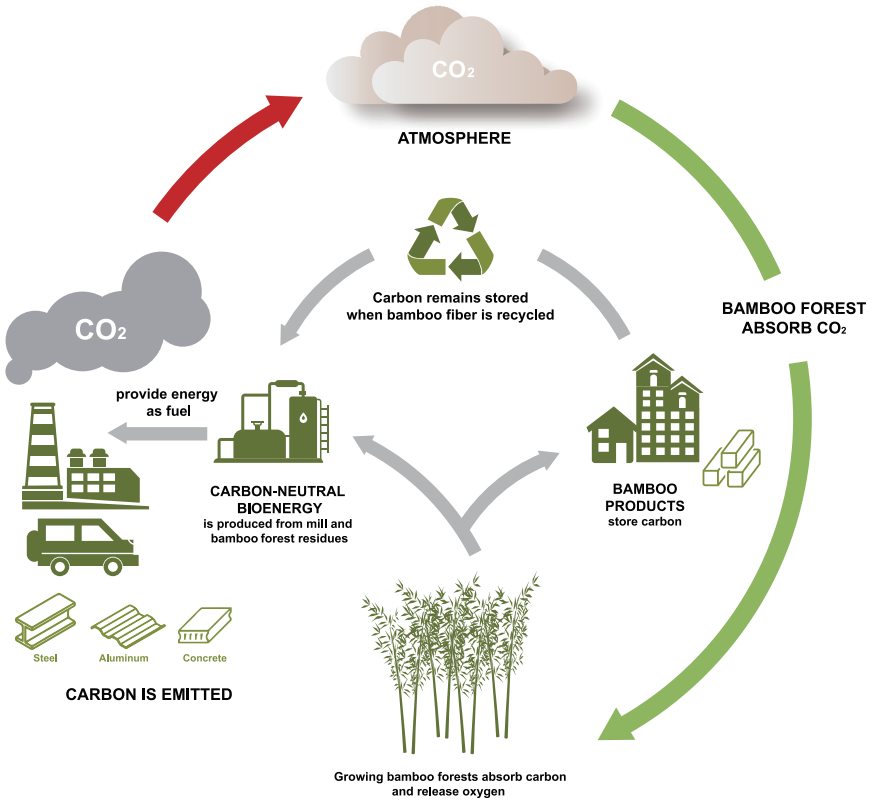


GREEN · BAMBOO · DASSO

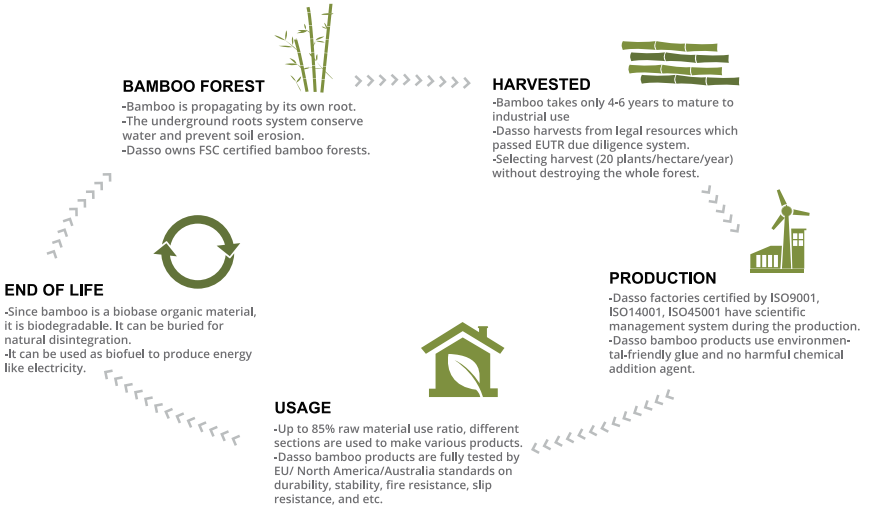


We are facing a significant global warming and rapid depletion of resources. It is our duty and responsibility to choose green and renewable resources and reduce carbon emissions.

BAMBOO FOREST CONTRIBUTES TO GLOBAL CARBON CYCLE



SUSTAINABLE LIFE CYCLE OF BAMBOO PRODUCTS



dasso Traditional Bamboo
EPD No.: S-P-01925



dasso Strand Woven Bamboo
EPD No.: S-P-01926



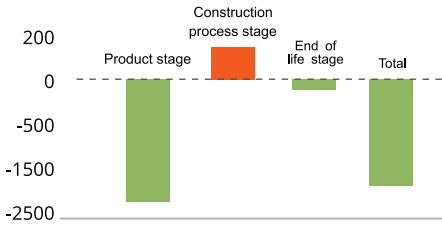
dasso Ecosolid Bamboo
EPD No.: S-P-01927



dassoXTR and dassoCTECH
EPD No.: S-P-01928

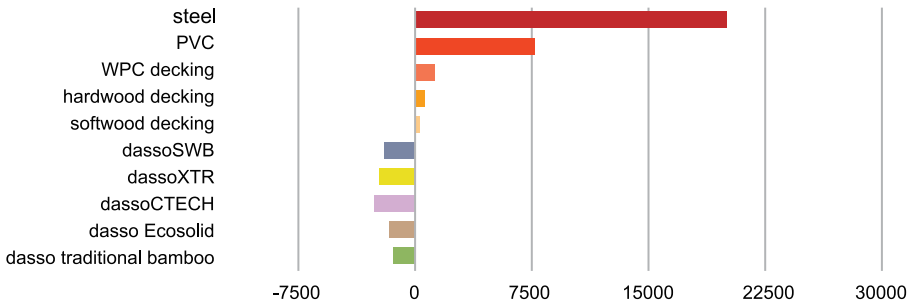
Dasso bamboo products have been EPD certified, indicated a friendly environmental impact during their entire lifespan (35-40 years).

Carbon footprint in each life stage of bamboo products (kg CO₂/M³)



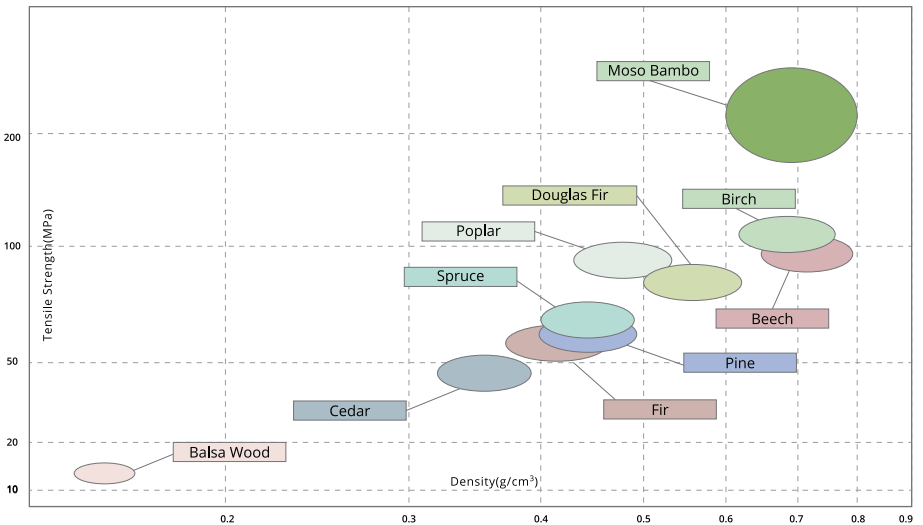
The left figure shows different stage of bamboo product contribute to the main environment impact with different shares, the total emission of CO₂ is negative which means "climate positive". The product stage include biological carbon sequestration and all production process.

Carbon footprint bamboo VS other material (kg CO₂/M³)



Bamboo raw materials have good mechanical properties. They can be processed and made into a variety of products with superior properties that are widely used in various applications and fields.

Material mechanical property comparison between bamboo and wood



*compare to other wood material, bamboo has the highest ratio of intensity/density, has the best mechanical property.

Mechanical property comparison between dasso bamboo exterior board and other exterior wood board

items \ species	dassoXTR	dassoCTECH	IPE	Merbau	Scots Pine
Density (g/cm ³)	1.15	1.2	1.1	0.815	0.55
Compressive strength (Mpa)	100	93	90	73.5	42
Janka hardness (N)	16,992	17,659	15,620	7,620	2,420
Modulus of elasticity (MOE) (MPa)	19.1	16.7	22.07	15.93	10.08

LEED v4/v4.1 BD+C assessment criteria with relation to dasso products

Criteria LEED	dasso Traditional Bamboo	dasso Strand Woven Bamboo	dasso Ecosolid Bamboo	dassoXTR	dassoCTECH
MATERIAL & RESOURCES	Building Life-cycle Impact reduction	●	●	●	●
	Building product disclosure and optimization-environmental product declaration	●	●	●	●
	Building product disclosure and optimization-sourcing of raw materials	●	●	●	●
	Building product disclosure and optimization-material ingredients				●
INDOOR ENVIRONMENTAL QUALITY	Low Emitting Materials			●	
	Acoustic performance	●	●	●	●
	Interior Lighting	Natural Color	Natural Color		
INNOVATION	Innovation			●	●

BREEAM assessment criteria with relation to Dasso products

Criteria BREEAM	dasso Traditional Bamboo	dasso Strand Woven Bamboo	dasso Ecosolid Bamboo	dassoXTR	dassoCTECH
Mat 01	Life cycle impact-Life cycle assessment(LCA)	●	●	●	●
	Environmental product declaration	●	●	●	●
Mat 03	Responsible sourcing of construction products-Sustainable procurement	●	●	●	●
	Responsible sourcing of construction products -Responsible sourcing of construction products	●	●	●	●
Mat 05	Designing for durability and resilience			●	●
Mat 06	Material efficiency	●	●	●	●
Hea 01	Visual comfort	●	●	●	●
	Indoor air quality-Indoor air quality program			●	
Hea 02	Indoor air quality-Releases of building products			●	
	Indoor air quality-Measurement of indoor air quality after completion			●	
Hea 04	Thermal comfort			●	●
Hea 05	Acoustic performance	●	●	●	●
Ene 04	Low carbon design			●	●
Inn 01	Hea 02 Indoor air quality			●	
	Mat01 Life cycle impact	●	●	●	●
	Mat03 Responsible sourcing of construction products	●	●	●	●

Green Star v3.2 assessment criteria with relation to Dasso products

Criteria Green Star	dasso Traditional Bamboo	dasso Strand Woven Bamboo	dasso Ecosolid Bamboo	dassoXTR	dassoCTECH
Materials	MAT-2 Building Reuse			●	●
	MAT-3 Sustainable Materials	●	●	●	●
	MAT-4 Low Emitting Material	●	●	●	●
	MAT-6 Timber	●	●	●	●
Energy	ENE-1 Energy			●	●
	ENE-2 Greenhouse Gas Emissions	●	●	●	●
	ENE-7 Peak Electricity Demand Reduction			●	●
Indoor Environment Quality	IEQ-6 Thermal Comfort			●	●
	IEQ-13 Internal Noise Levels		●		
Innovation	Adaptation and resilience			●	●
	Culture heritage and identity			●	●
	Financial transparency	●	●	●	●
	Material life cycle impacts	●	●	●	●
	Environmental product declarations	●	●	●	●



The mark of responsible forestry
Ask about FSC® certified material

Dasso Bamboo Products

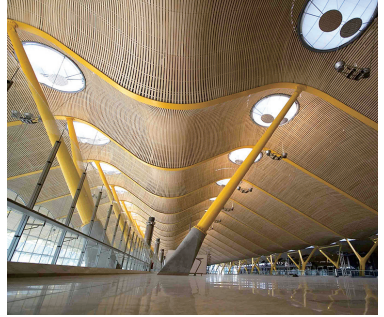
After decades of development in bamboo industry, dasso has the advanced skills, technology (patent owner) and automatic manufacturing equipment. We have gathered talented people to develop a management system that focuses on production and quality control. This enables dasso to provide bamboo products with consistent superior quality for all kinds of applications.



dassoFlooring



dassoFurniture



dassoElements



dassoXTR / CTECH



dassoArchitecture



dassoInnovation

About Dasso

Founded in 1993, Dasso is the global leader and innovator of the bamboo industry. We provide high quality bamboo products and integrated bamboo solution.





**Hangzhou Dasuo
Technology Co.,Ltd**



**Hangzhou Zhuangyi
Furniture Co.,Ltd**



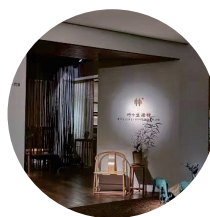
**Fujian Dasso Industry
Co., Ltd**



**Zhejiang Daocheng Bamboo
Industry Co., Ltd**



**Jiangxi Zhushang Bamboo
Industrial Co.,Ltd**



Zhujia Gallery



**Zhejiang Xinhaiye Bamboo
Technology Co.,Ltd**



**Shunchang Zhujia Bamboo
Industrial Co.,Ltd**



**dasso sustainable
bamboo forest**



dasso China

Add: Tongyi Village, Linpu, Xiaoshan, Hangzhou, China 311251

Tel: 86.0571.5716.3765

Fax: 86.0571.5716.3700

Email: info@dassoGroup.com

Web: www.dassoGroup.com

dasso USA

Add: 6060 Boat Rock Blvd, Suite 800, Atlanta, GA 30336

Tel: 1.404.691.6872

Fax: 1.404.691.6870

Email: info@dassousa.com

Web: dassoxtr.com